

NOTES

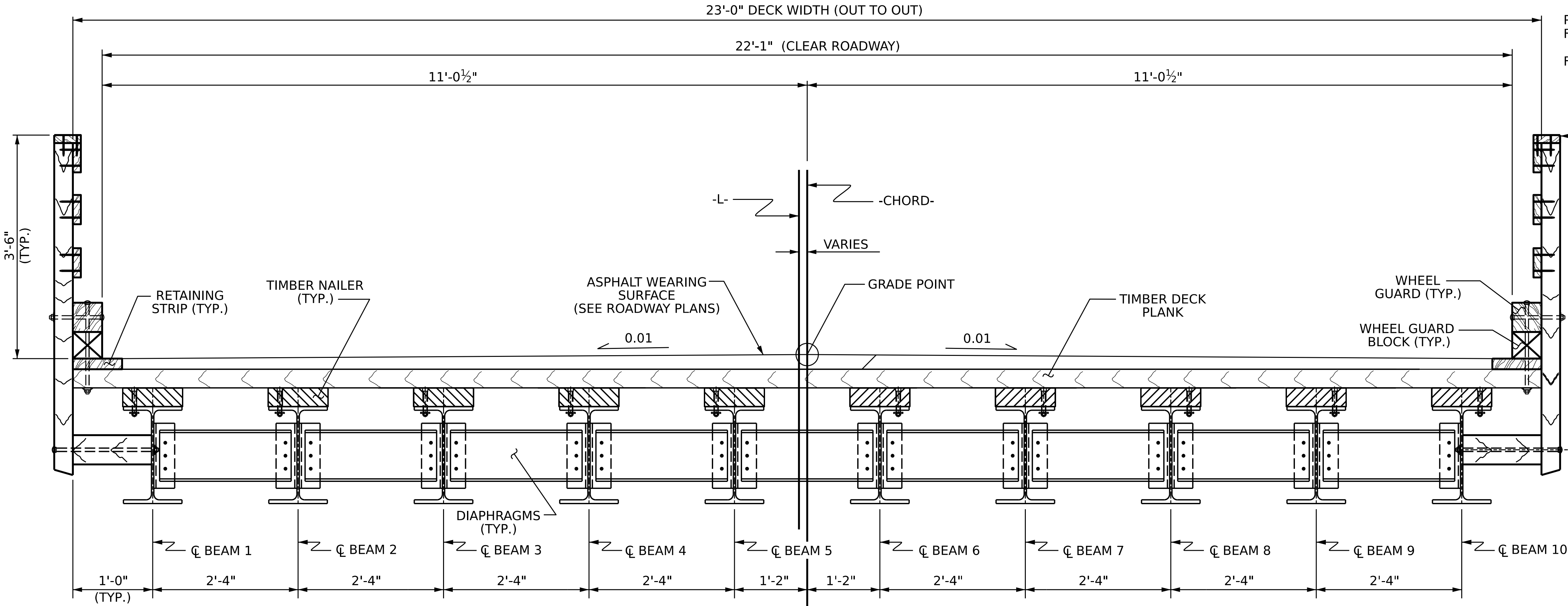
FOR TIMBER BRIDGE DECK SYSTEM DETAILS, SEE PLAN OF SPAN SHEET.

FOR TIMBER BRIDGE RAIL SYSTEM DETAILS, SEE "TIMBER BRIDGE RAIL SYSTEM" SHEET.

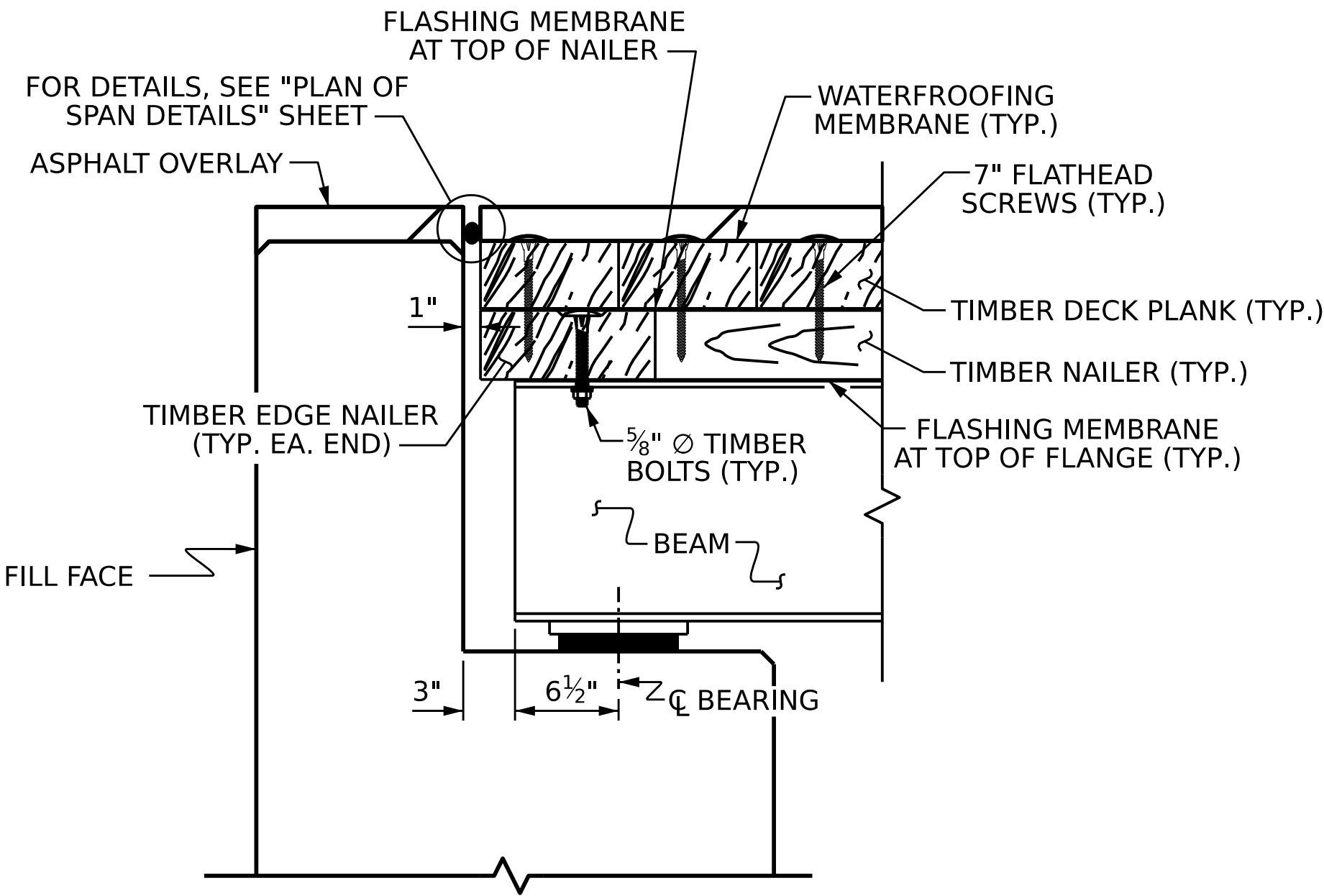
PRIOR TO PLACING TIMBER BEAM NAILER AND EDGE NAILER MEMBERS, PLACE A FLASHING MEMBRANE ON THE TOP SIDE OF THE STEEL BEAMS.

PRIOR TO PLACING TIMBER PLANK MEMBERS, PLACE A SELF-ADHERING FLASHING MEMBRANE ON THE TOP SIDE OF THE TIMBER NAILERS.

FOR BEAM AND DIAPHRAGM DETAILS, SEE "FRAMING PLAN" SHEET.



TYPICAL SECTION



SECTION AT END BENT

PROJECT NO. DF18314.2045324

HENDERSON COUNTY

STATION: 11+67.50 -L-



STATE OF NORTH CAROLINA
DEPARTMENT OF TRANSPORTATION
RALEIGH

STANDARD
SUPERSTRUCTURE
TYPICAL SECTION
40FT SECTION

DOCUMENT NOT CONSIDERED FINAL
UNLESS ALL SIGNATURES COMPLETED

TGS ENGINEERS
201 W. MARION ST STE 200
SHELBY, NC 28150
PH (704) 476-0003
CORP. LICENSE NO.: C-0275

REVISIONS						SHEET NO.
NO.	BY:	DATE:	NO.	BY:	DATE:	
1			3			S-5 TOTAL SHEETS 13
2			4			

ASSEMBLED BY:	ZCS	DATE :	5/25
CHECKED BY :	MCC	DATE :	7/25
DRAWN BY :	BNB	4/24	
CHECKED BY :	JDH	10/24	